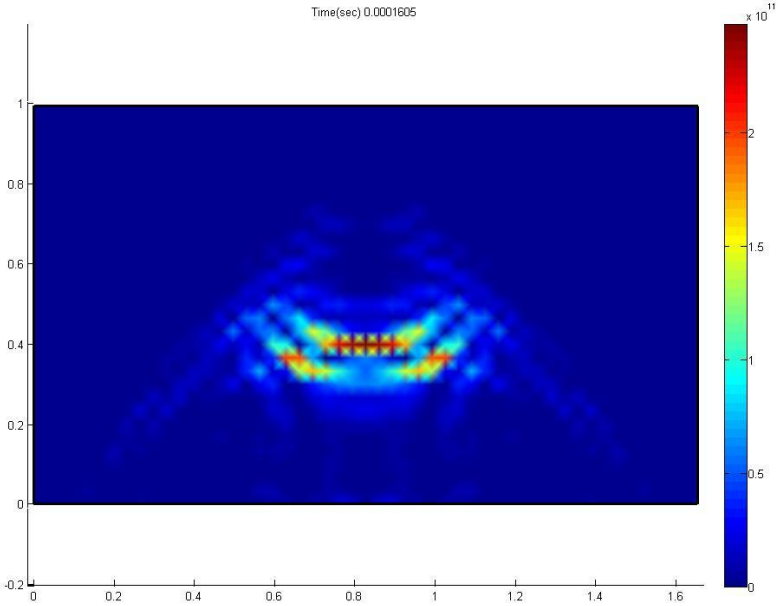
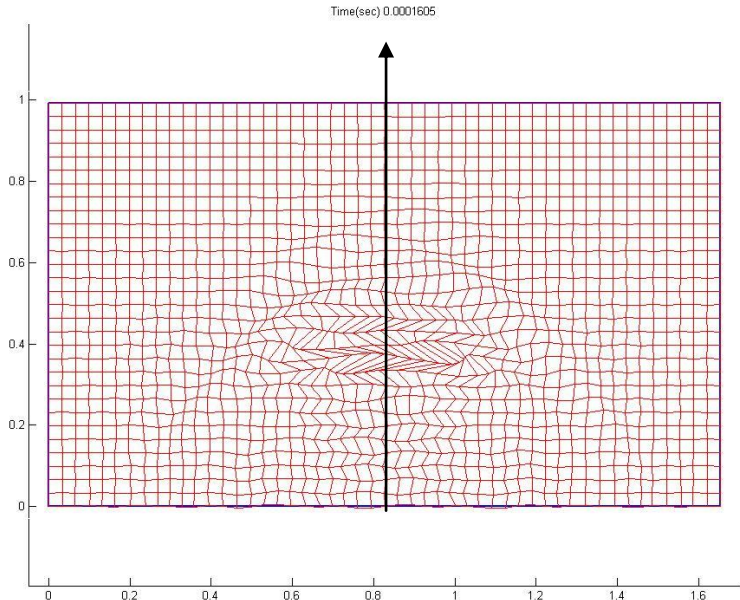


# Prediction of Energy Flux Deviation using FEM

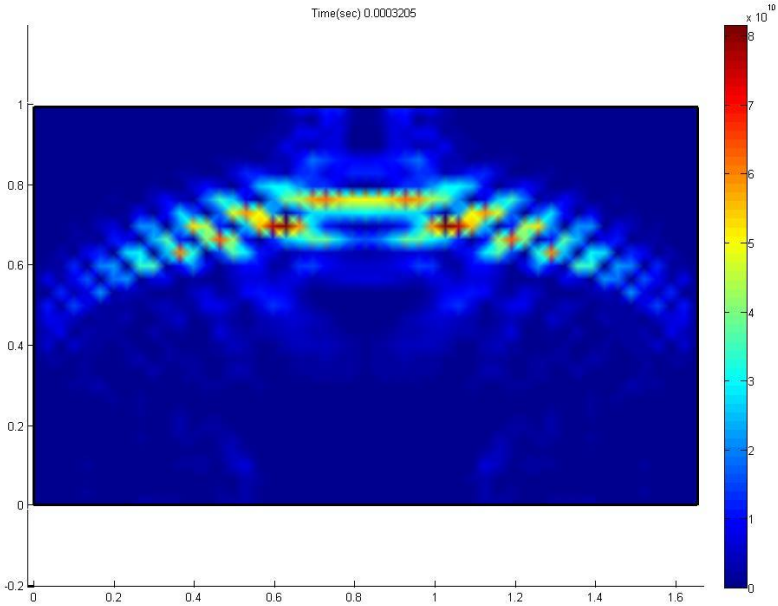
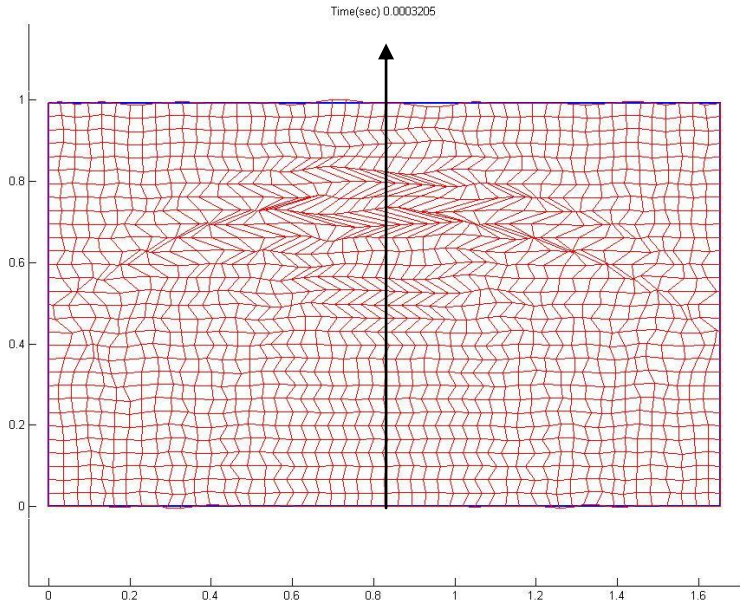
(Deformed mesh and energy flux vector contours)



Isotropic Material, 0° Fiber orientation

# Prediction of Energy Flux Deviation using FEM

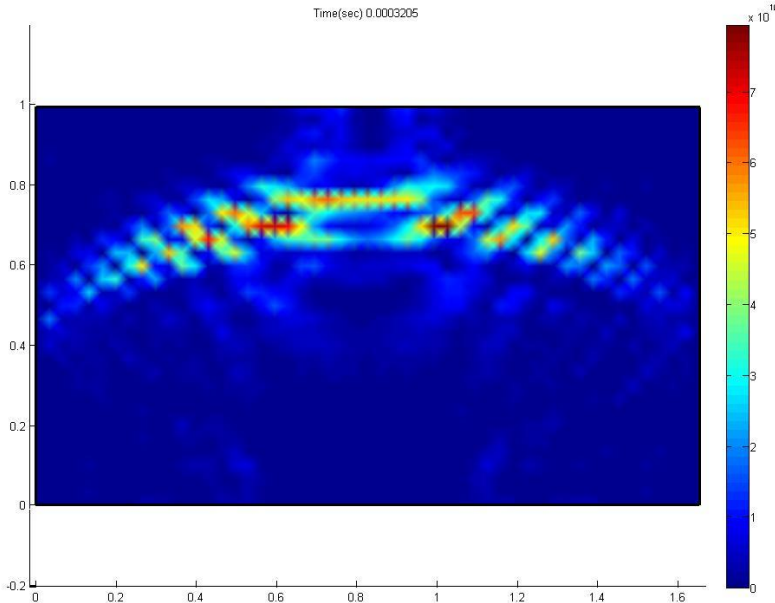
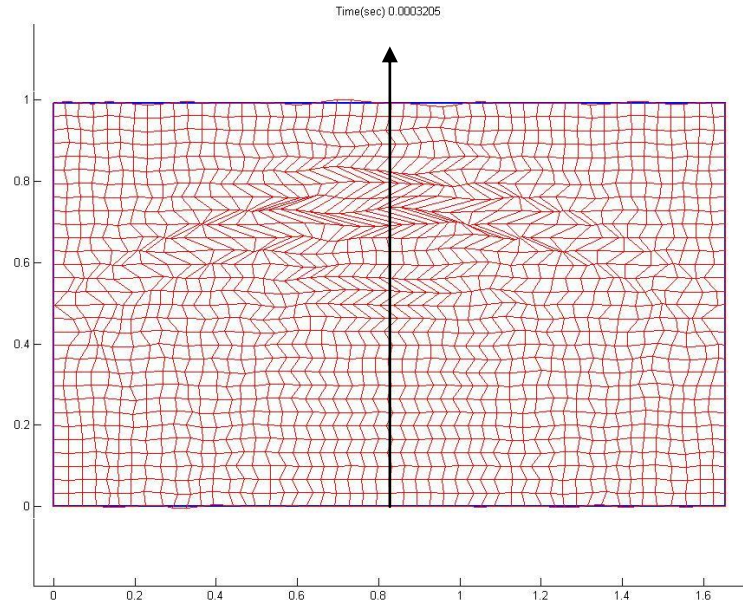
(Deformed mesh and energy flux vector contours)



Anisotropic Material(gr/ep),  $0^\circ$  Fiber orientation (No applied stress)

# Prediction of Energy Flux Deviation using FEM

(Deformed mesh and energy flux vector contours)



Anisotropic Material(gr/ep),  $0^\circ$  Fiber orientation ( applied shear stress)